

# NAMOSI PROJECT BRIEFING 2011



# Outline



## 1. Introduction

## 2. History

## 3. Project Development stages

## 4. Project Description

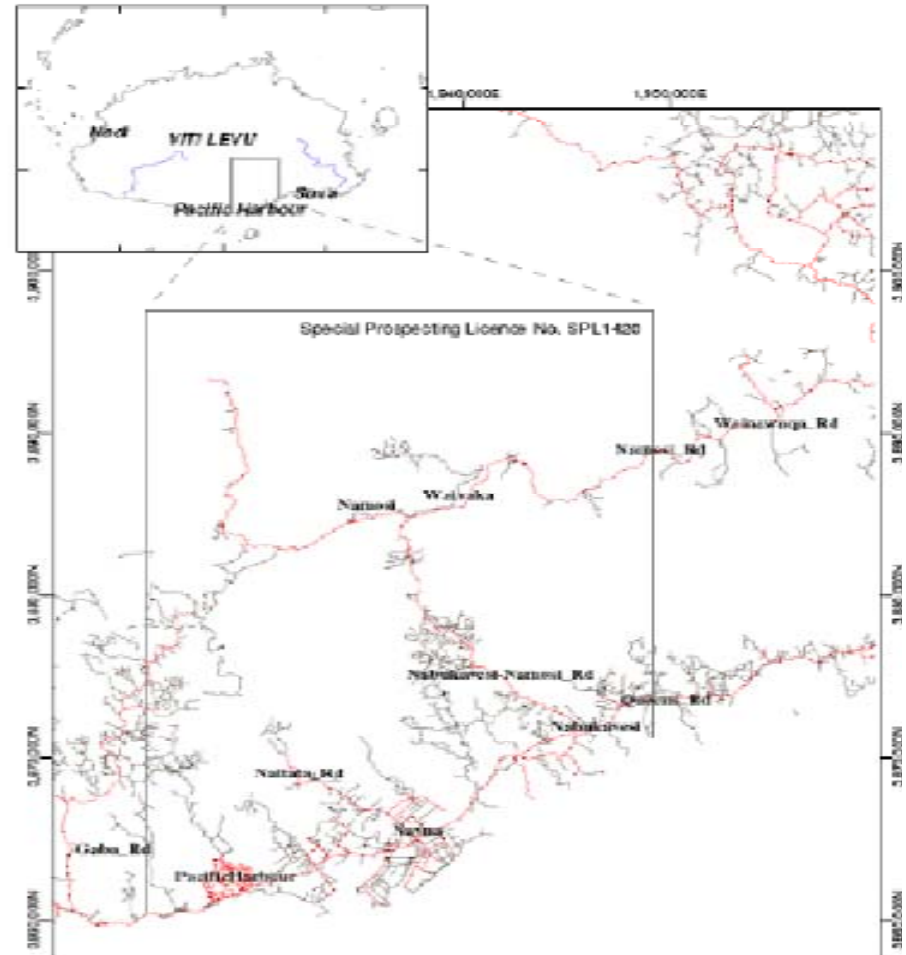
- Mine, access and port
- Management strategies
- Current and future benefits

## 5. Questions and Answers

# Introduction- Namosi Joint Venture



- Formed January 2008
- Ownership
  - Newcrest (Fiji) Ltd
  - Mitsubishi Materials Corporation
  - Nittetsu Mining Co. Ltd
- Purpose
  - Explore for and develop potential gold / copper mines in Namosi area (SPL1420)



# History



- Exploration in Namosi area since the 1970s
- SPL 1420 granted in 2001 to Nittetsu
- Namosi Joint Venture (NJV) formed in 2008
- NJV is exploring SPL 1420 - mainly drilling.



**We are here**



- NJV is studying whether it is possible to develop a mine at Waisoi.
- A mine would only be developed if it can be done safely and economically.
- A mine needs environmental approval, Government approval (mining lease) and landowner support.
- The studies assess these things.

# Environmental Impact Study (EIA)



The EIA is a requirement under Fijian Law

The EIA includes studies that assess the impacts of the proposed project on environment and on communities, including management measures

The EIA also assess opportunities for the communities and addresses social components of communities, including;

- stakeholder engagement, community health, cultural heritage, socio-economic and traffic

When completed the government will review the EIA and the government may then approve the project going ahead.

# Terms of Reference (ToR)



## The Terms of Reference;

- is centred on what the NJV must study, where and to what level
- is a legal requirement that is part of the Environmental Impact Assessment
- is usually completed by Government
- requires input from community and stakeholders
- Is usually completed within 30 days from the date the screening application is lodged according to Fijian Law

# EIA Timelines



- Environmental baseline studies commenced late 2010
- Social data collection started June 2011
- Information gathering July - November 2011
- Impact assessment studies August - November 2011
  
- EIA submission to Fiji government - January 2012
- EIA review by Fiji government 2012
  
- Government decision on EIA
- NJV decision to proceed with Project





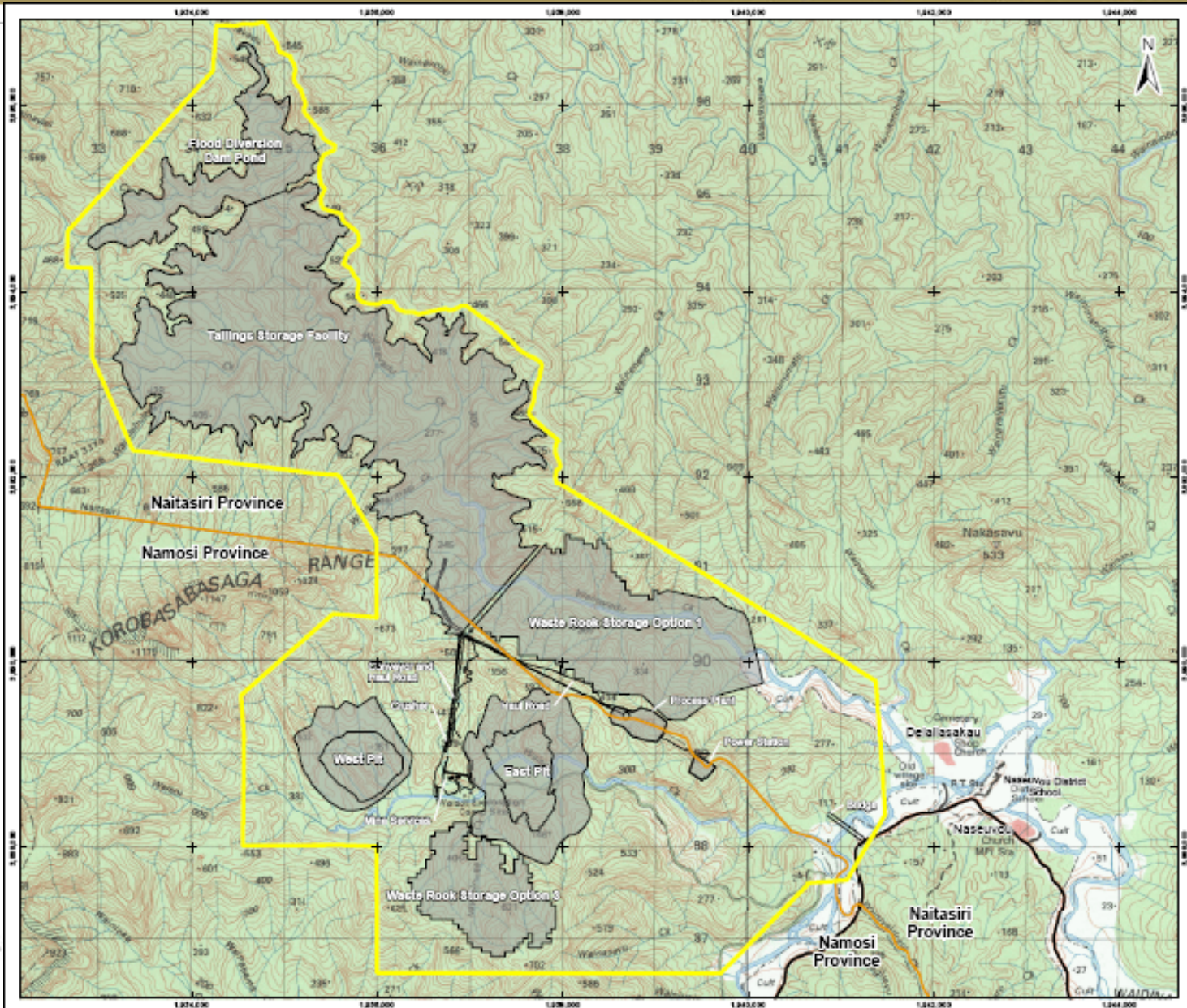
- **Plants and animals - bio-diversity in areas around the project**
- **Soil, Air and Water - maintain quality**
- **Waste rock & tailings - ensure safe and stable storage**
- **Rehabilitation and closure planning - based on proven science and community consultation**
- **Community - baseline social-economic studies and on-going consultations**

# Proposed Waisoi Mine Development



- Two mining pits at Waisoi
- Treatment plant at site to produce concentrates
- Waste rock and tailings storage close to Waisoi - eg Waisoi Valley or Wainavadu Valley
- On site power station
- Also looking at renewable energy possibilities

# Proposed activity areas

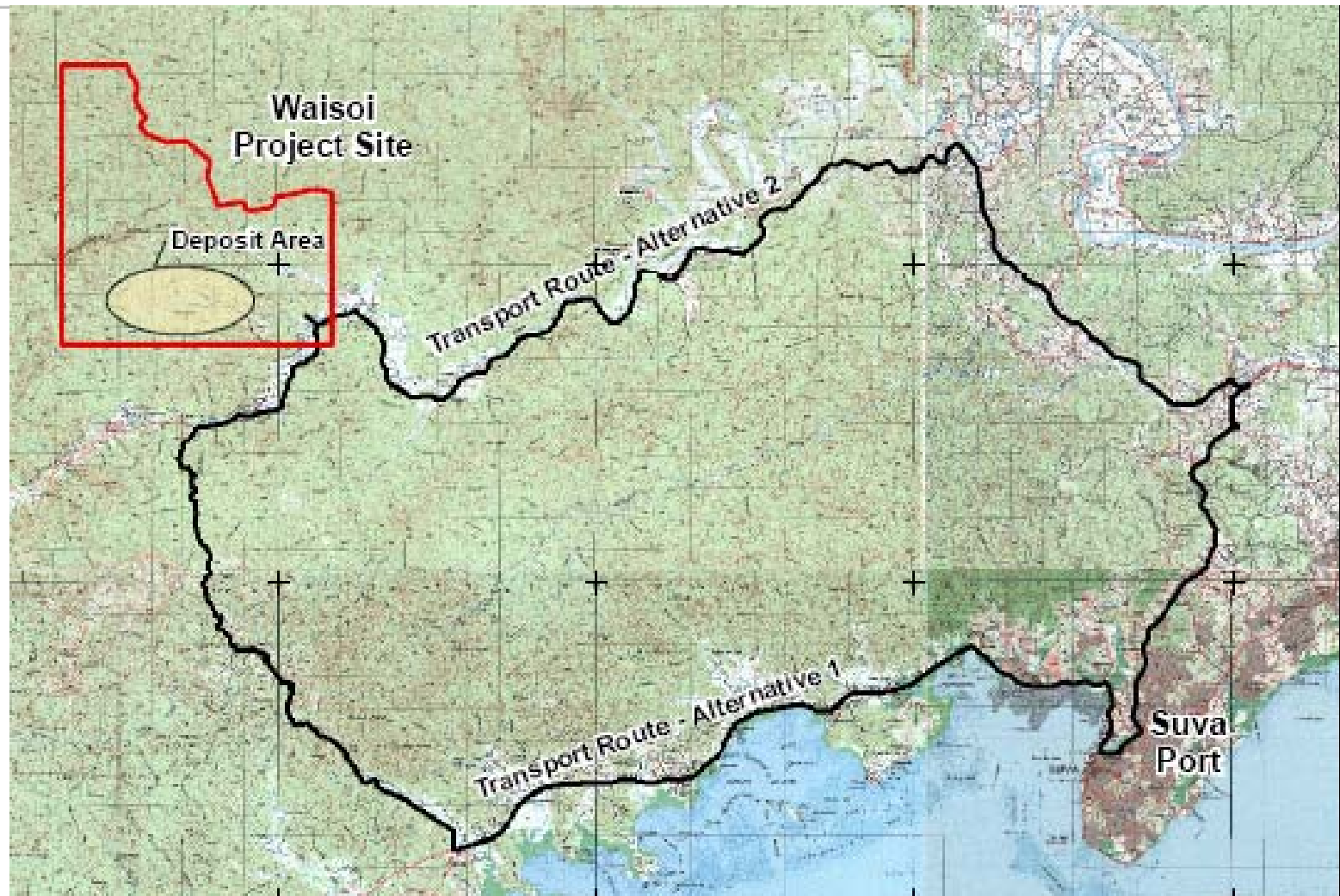


# Proposed Waisoi Mine Development



- Truck concentrates to Suva Port via Waidina road.
  - Approximately 40 trucks per day
  - Road widening and diversions around villages
  - Limited hours of operation and strict control of truck speed
- Light vehicle traffic along the Namosi road.
- Construction workforce could reach 2000, mostly housed at site.
- Operations workforce could reach 1000-1200, housed locally and on the coast.

# Transport Routes



# Project description -Impacts



- Land used for mining and waste rock storage
- Land used for production- treatment plant, roads, power plant
- Increased traffic (trucks and light vehicles)
- Social-economic change
- Introduction of wage economy to mine area



# Project description -



## Benefits

- Employment and training
- Community contributions
  - Education aid and scholarships
  - Negotiated benefits
- Partnerships with provincial councils
- Government Revenue & Royalties
- Negotiated compensation to affected landowners
- Business opportunities
- Improved infrastructure-communications, road network



# Open pit mining is big scale





# Haul Truck



# Development example - Processing Plant



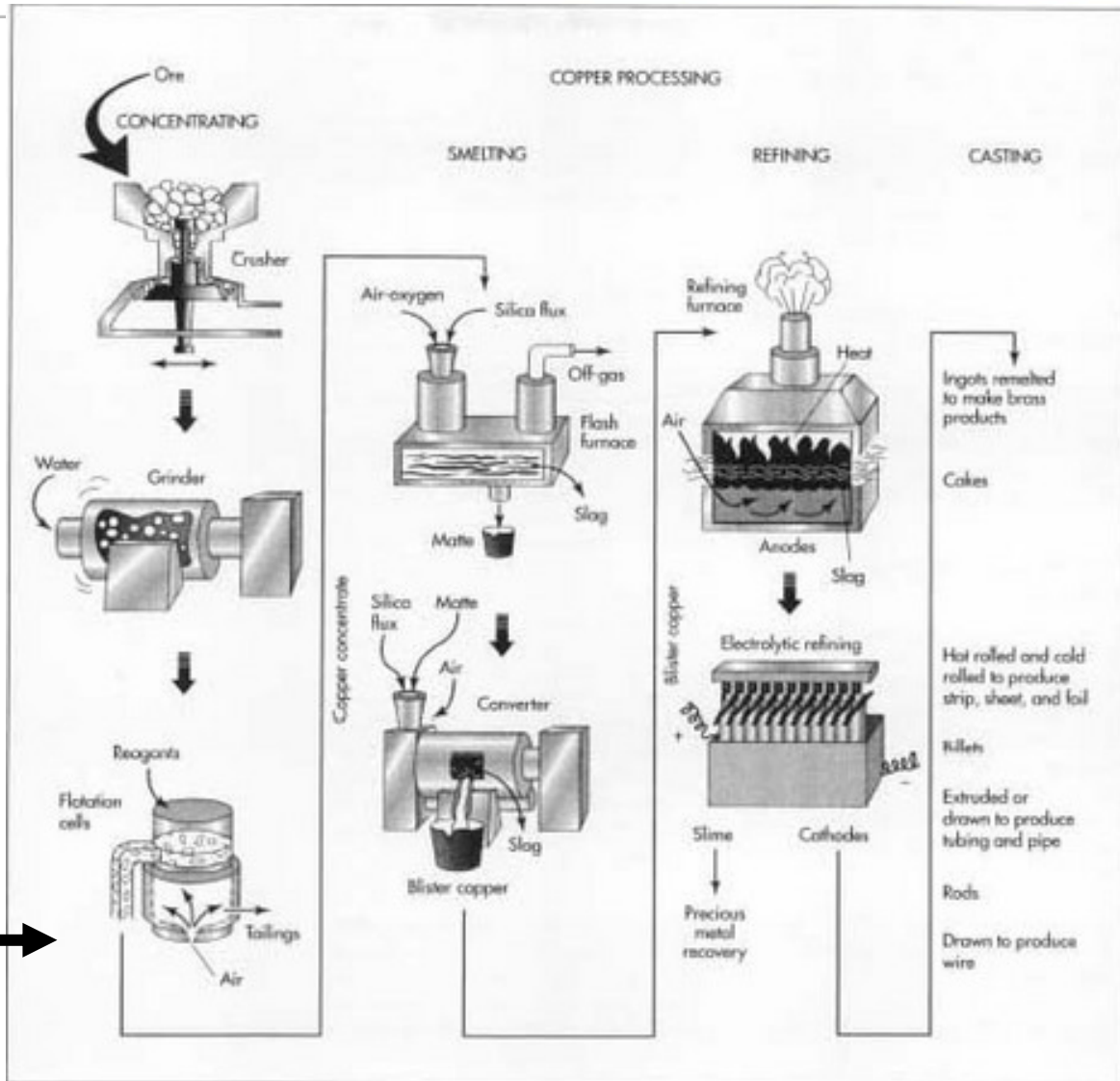
# Processing copper ore



The process will concentrate copper as the main product.

The concentrate will be exported for smelting and refining by the customer.

The work done in Fiji takes the ore to this stage.



# Rehabilitation & closure planning



## Rehabilitated waste rock dump and settlement pond



Conclusion



Questions

and

Discussion

**VINAKA VAKALEVU!**