

National Environment Council Meeting

NJV Rehabilitation Update

March 2013

Greg Morris Country Manager Namosi Joint Venture

Outline

1. Namosi Joint Venture
2. Context
3. Accelerated Rehabilitation Action Plan (RAP)
4. The RAP Process
5. Looking Forward
6. Information – www.njv.jj

Namosi Joint Venture



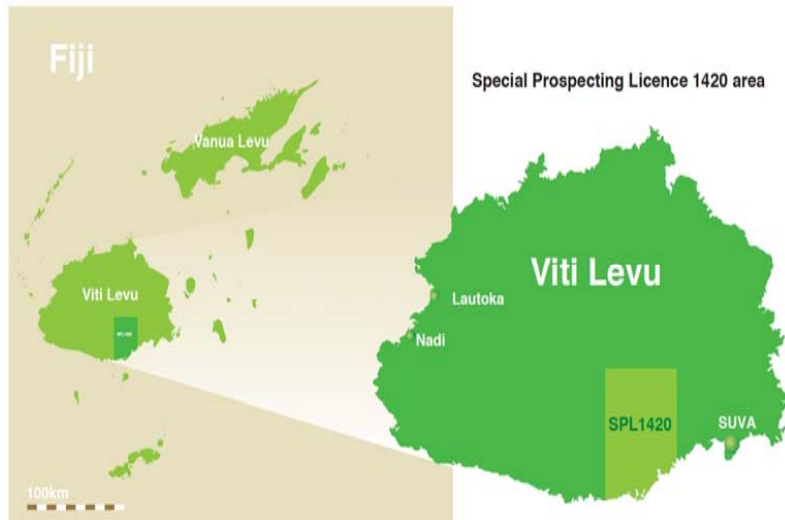
Formed in January 2008

- Newcrest (Fiji) Ltd - 69.94%
- Materials Investments Fiji (Ltd) – 28.06%
- Nittetsu Mining Co. Ltd - 2%

Newcrest is operator and manager

Special Prospecting Licence (SPL 1420) granted to March 2015

Primarily in Namosi and Naitasiri Provinces



Context

Exploration in the area for 40 years by a variety of companies

Some context for the RAP:

1. Area of Special Prospecting Licence 1420 – 82,491 hectares
2. Pre NJV exploration related disturbance – 65 ha
3. NJV exploration related disturbance – 16 ha
4. Total area of exploration related disturbance – 81 ha
5. For comparison Namosi Village 18.3 ha

Accelerated Rehabilitation Action Plan (RAP)

1. Tikina Namosi Landowners Committee (TNLC) presentation to the Fiji Prime Minister in which they raised a number of concerns about current and historical exploration activities
2. RAP was developed and agreed to by the three parties Government, TNLC and NJV
3. Signed by all three parties on 22 February 2012 and presented to PM - Consisted of 53 actions in total
4. Development of a detailed rehabilitation plan\actions assigned to various parties
5. Weekly technical meetings ,Fortnightly RAP meetings
6. Progress reported back at RAP meetings using the RAP Matrix
7. Additional issues raised in meetings
8. Monitors
9. RAP signed off as complete on the 04th May 2012 (recognising plan in place to complete rehabilitation works)

Landowner Awareness Sessions



INFORMATION SESSION 8

NAMOSI REHABILITATION WORKS



INVESTIGATION WORKS



- Waivaka & Waisoi:
 - NJV provided data regarding the Access Tracks and Drill Pads requiring rehabilitation.
 - Site visit/inspection to determine the extend of landslips.
 - Additional sites were added to the rehabilitation scope which were found during the investigation works.
 - Determine the terrain and location of the landslips in Namosi area.
 - Identification of the local plants species in consultation with TNLC and landowners.
 - Identification of the rehabilitation process required for the landslips in Namosi area.

PHYSICAL WORKS PROCESS



➤ Slope trimming & cut-off drains.



➤ Geo-textile installation.



➤ Hydro-seeding.

PHYSICAL WORKS PROCESS

- **Planting – Trees & Ferns.**



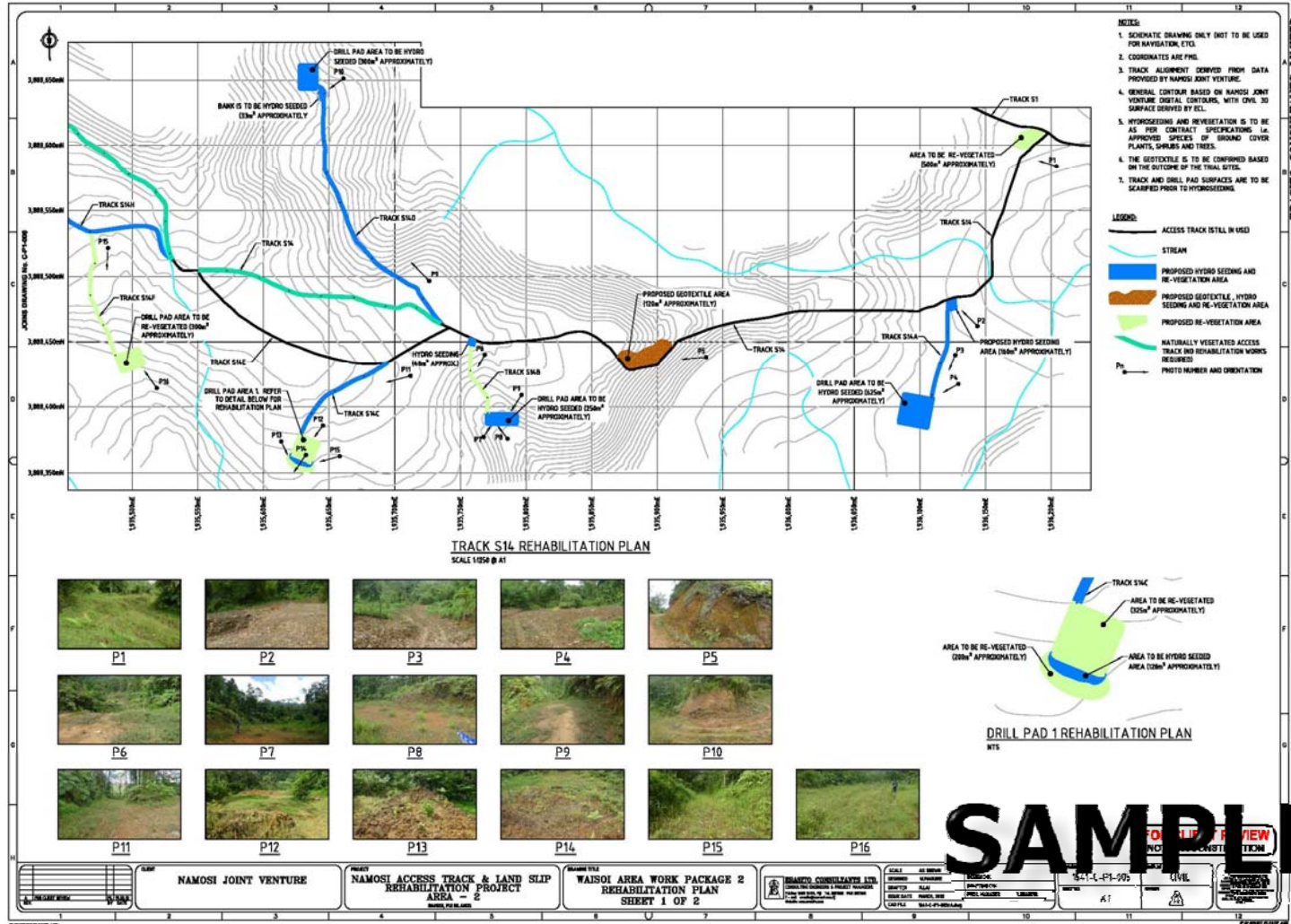
- **Fully restored habitat .**



COMPLETION & MAINTENANCE

- **Completion**
 - Keep the site clean and tidy. All foreign materials and rubbish are to be removed from the site and disposed of properly.
 - The tidy up works may be staged depending on the works being undertaken at a particular site.
- **Maintenance**
 - Water hydro-seeded areas and plants during dry weather conditions.
 - Constant monitoring of the rehabilitated areas to determine the progress of rehabilitation process.
 - Six month defects liability period.
- **Non-biodegradable Materials**
 - Excavation and Removal of non-biodegradable materials from the Drill Pad sumps.
 - Disposal of the non-biodegradable materials in a legal manner as directed by NJV.

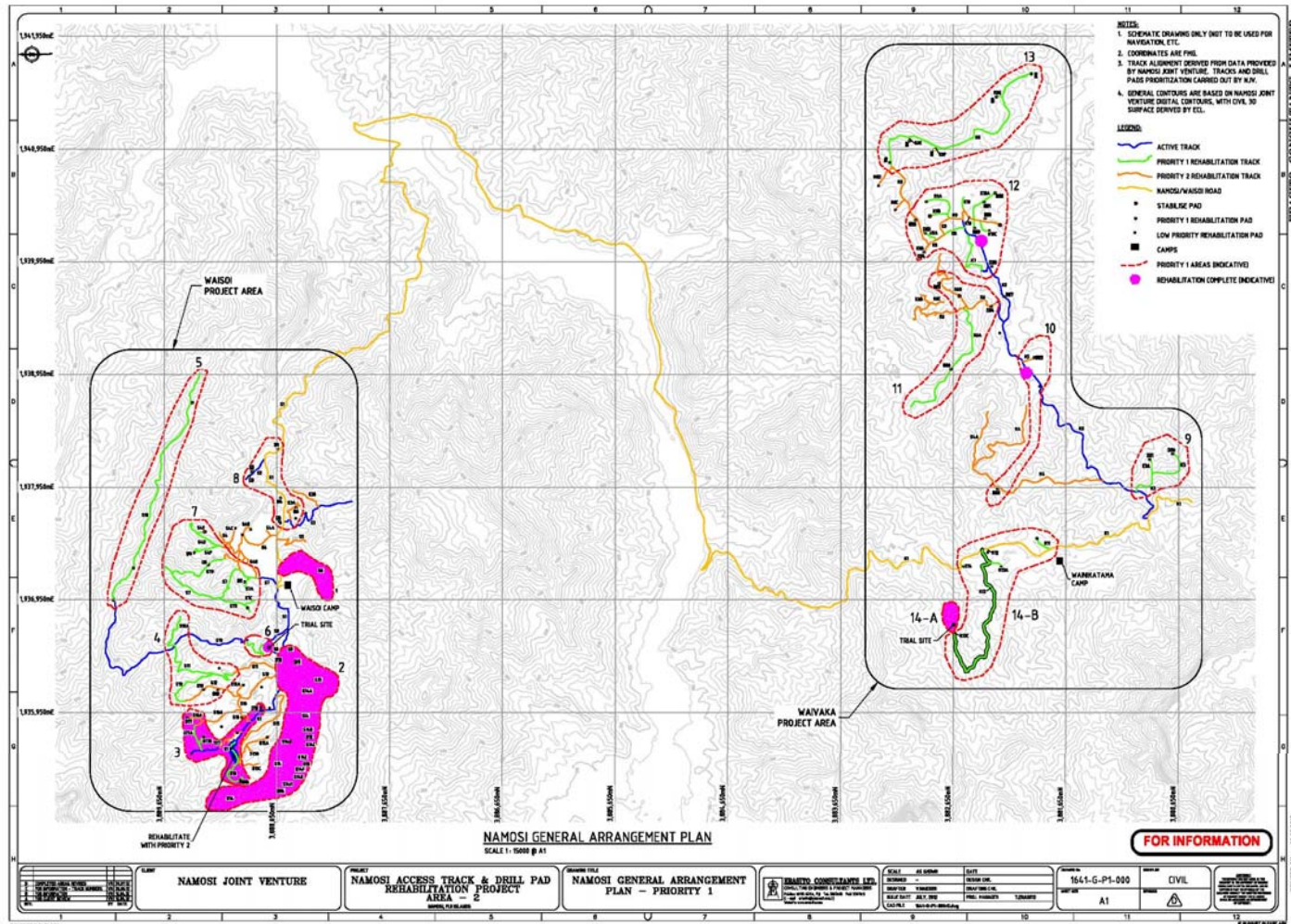
REHABILITATION DRAWING



PHASE 1 – PILOT SITES

- **Phase 1 – Pilot Sites - complete:**
 - **Two Pilot Sites initially – Pilot Site 24 (Waisoi) & Pilot Site 38 (Waivaka).**
 - **To establish processes that will provide methodologies for future rehabilitation works.**
- **Additional Work Packages - complete:**
 - **Continue with the rehabilitation works – additional work packages were submitted to the Contractor.**
 - **WP1, WP2, WP3, NVD 039 & NVD 040.**
- **Completion & Maintenance:**
 - **Rehabilitation works – 100% completed.**
 - **Defects Liability Period (6 months) – End of January, 2013.**
 - **The sedimentation/silt ponds - Monitored and cleaned regularly.**
 - **The removed silt material has been stockpiled in a bunded area – located near the Core Yard Area.**

PHASE 1 – PILOT SITES



PHASE 1 – PILOT SITES



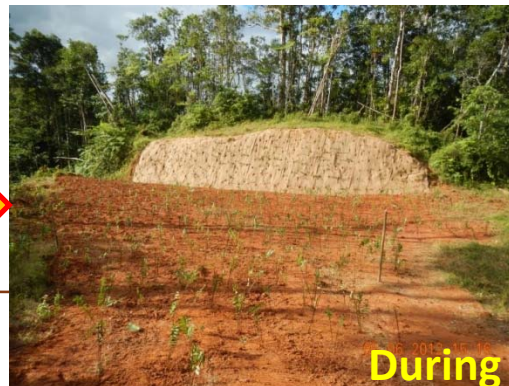
Pilot Site 24



Pilot Site 38



WP14A



PHASE 1 – PILOT & ADDITIONAL WP'S



PHASE 1 – PILOT & ADDITIONAL WP'S

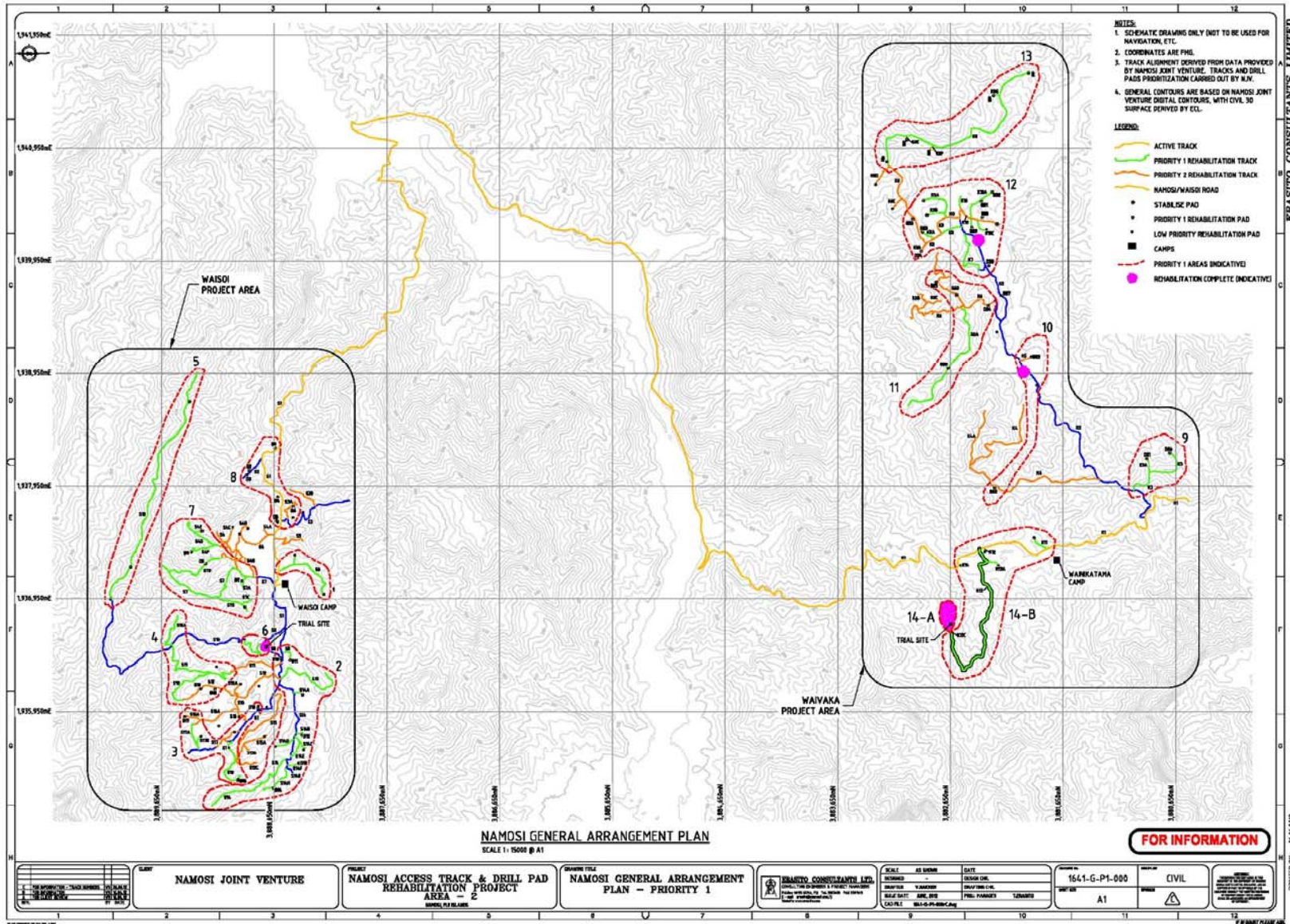


Accelerated Rehabilitation Programme

Rehabilitation

- The rehabilitation Phase 2 Priority 1 works were completed as of 19th February 2013
- Phase 2 Priority 1 Maintenance period goes until end of August 2013
- Commenced assessment of access track and drill pad rehabilitation completed to date. Field work completed, report pending
- Assessment done with Beca Consultant and involvement of TNLC / Land Owners in the process
- Results of assessment will be used to scope the works required for the completion of the remaining RAP work packages (Phase 2 Priority 2)
- April to June – prepare contract documents, select contractors and commence work June

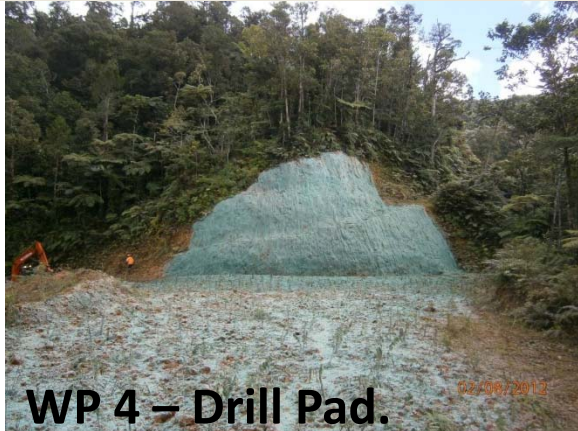
PHASE 2 – PRIORITY 1 SITES



ERASITO CONSULTANTS LIMITED

PRINTED ON: 24.04.2012

PHASE 2 – PRIORITY 1 SITES



Work Package 4 - Waisoi Area						
Earthworks: <i>(m²)</i>	Drainage: <i>(m)</i>	Geo-textile: <i>(m²)</i>	Hydro-seeding: <i>(m²)</i>	Planting (No.)		
				Ferns:	Shrubs:	Trees:
2,504	251	630	3,830	12,398	-	214
Status: <i>Rehabilitation works have been completed.</i>						



Work Package 5 - Waisoi Area						
Earthworks: <i>(m²)</i>	Drainage: <i>(m)</i>	Geo-textile: <i>(m²)</i>	Hydro-seeding: <i>(m²)</i>	Planting (No.)		
				Ferns:	Shrubs:	Trees:
1,942	121	186	6,203	106,750	-	412
Status: <i>Completed.</i>						

PHASE 2 – PRIORITY 1 SITES



Work Package 6 - Waisoi Area						
Earthworks: (m ²)	Drainage: (m)	Geo-textile: (m ²)	Hydro-seeding: (m ²)	Planting (No.)		
				Ferns:	Shrubs:	Trees:
503	16	940	0	11,000	-	0
Status: Completed.						

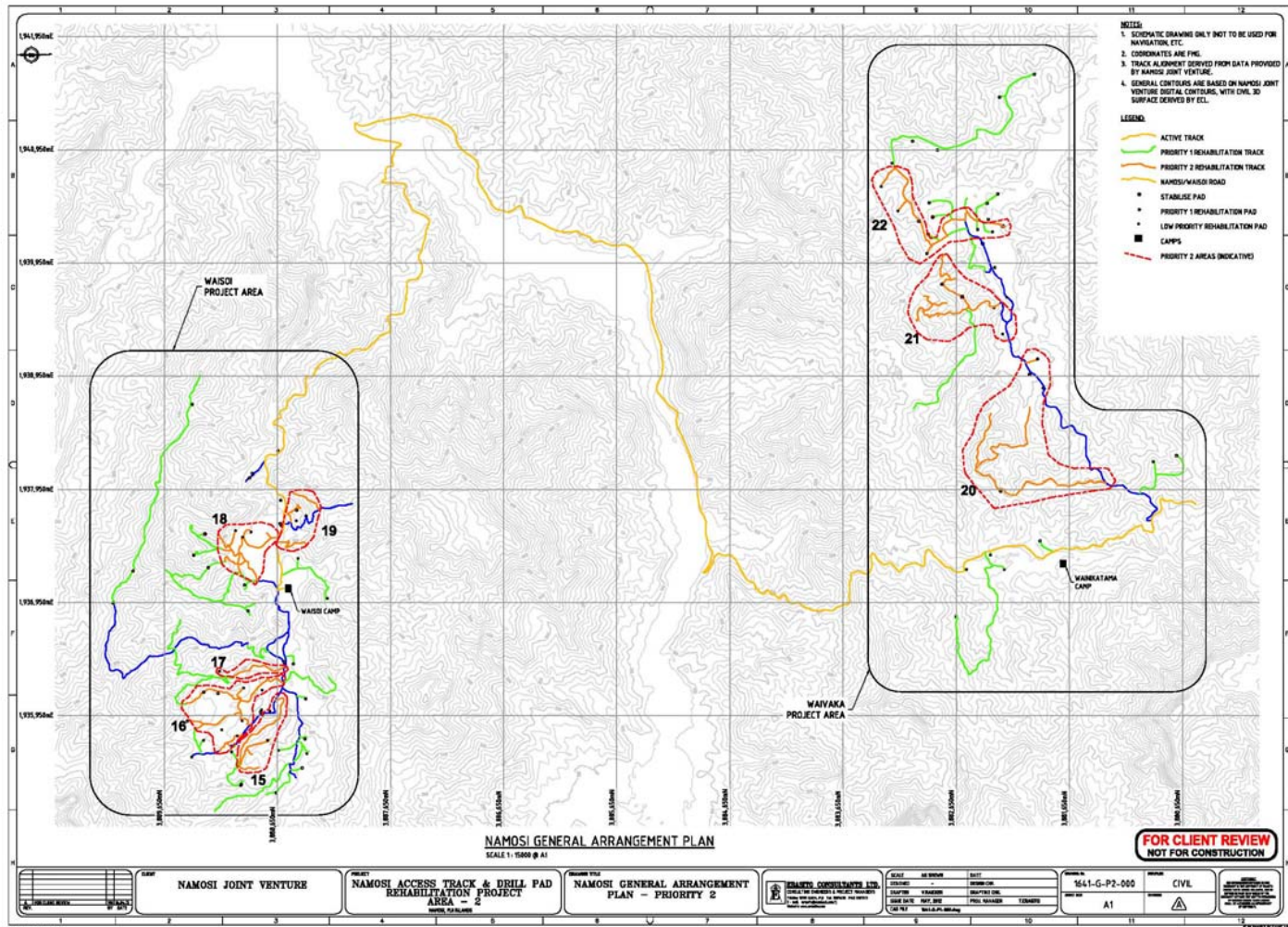
WP 6 – Access Track S10.



Work Package 7 - Waisoi Area						
Earthworks: (m ²)	Drainage: (m)	Geo-textile: (m ²)	Hydro-seeding: (m ²)	Planting (No.)		
				Ferns:	Shrubs:	Trees:
3,600	203	21	3,792	42,780	-	352
Status: Completed.						

WP 7 – Access Track S7B.

Accelerated Rehabilitation Work - Phase 2 Priority 2 Areas



Landowner Participation



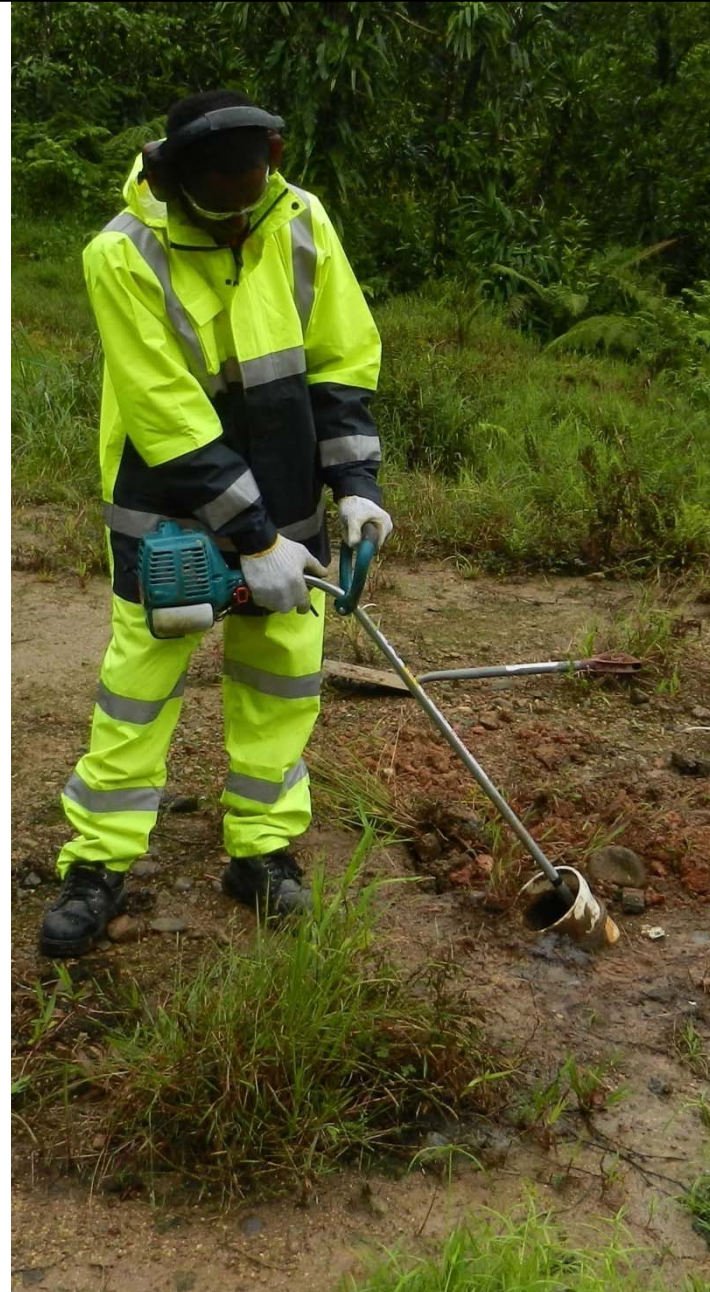
Hydro Seeding



Hydro seeding a drill pad



17.3 Recapping or rehabilitation of overflowing drill pads should be according to the MRD code of conduct irrespective of the drilling method



9.1 TNLC to identify locations of refuse. NJV will remove.
Waivaka area due to complete 21st March and Waisoi area to follow.



9.1 TNLC to identify locations of refuse. NJV will remove.
Waivaka area due to complete 21st March and Waisoi area to follow.



Rehabilitating the Environment

Exploration



Accelerated Rehabilitation Programme



NVD 039 March 2012



NVD 039 March 2013

Community Nursery Nasevou



Community Nursery Namosi

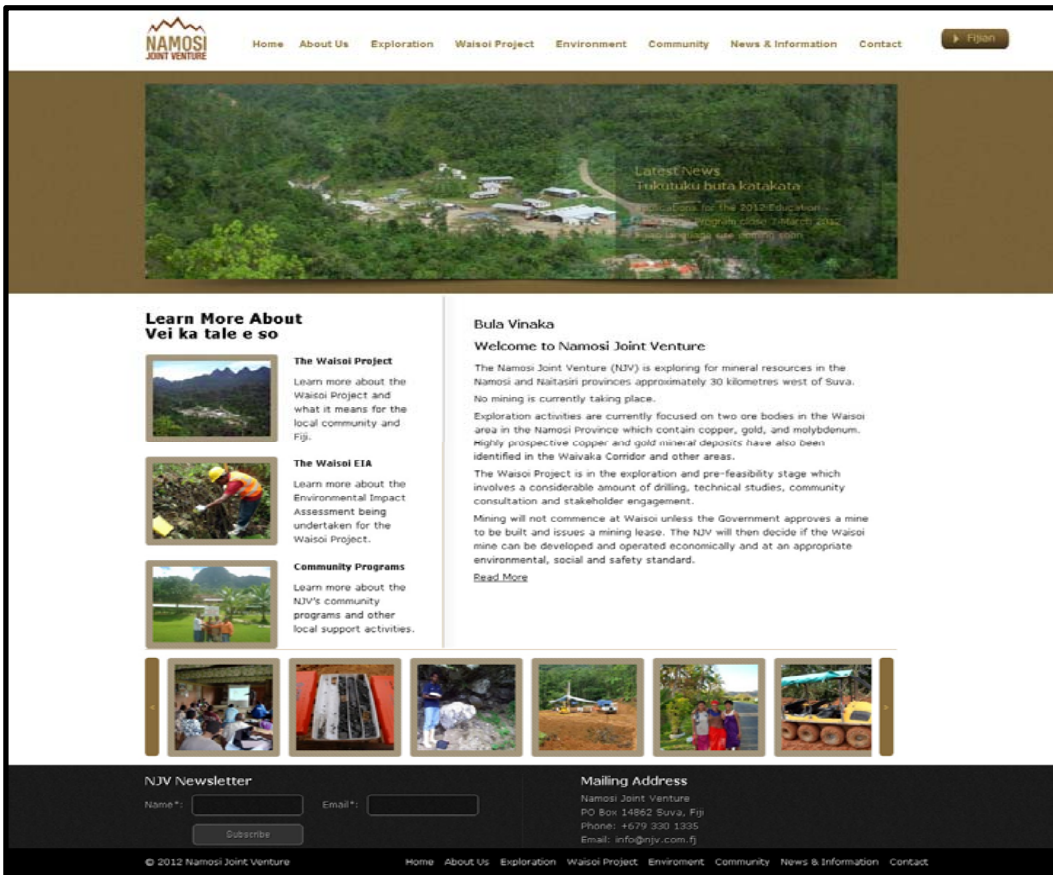


Looking Forward



- Completion of Community Nurseries and training of Villagers April 2013
- Completion of Phase 2 Priority 2 Rehabilitation works
- Ongoing Exploration activity over the SPL 1420
- Completion of PFS June 2013
- Revised Project Description
- Discussions with DoE re ToR (revisions if necessary)
- Continue EIA process

Waisoi Project - communications



Website launched early
March 2012

www.njv.com.fj

ITaukei website
launched July 2012

Information materials:

- Maps
- Physical models
- Newsletter
- Brochures
- Fact sheets
- Posters
- Frequently asked questions

Vinaka Vakalevu E so na Taro?

