

20th Australia Fiji Business Forum

Fiji IS OPEN for BUSINESS

Session 6: Industry Updates and Opportunities

2: Resources - Namosi Joint Venture Update

July 2013

Greg Morris Country Manager Namosi Joint Venture

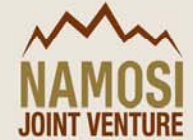
Outline

1. Why Fiji?
2. Namosi Joint Venture
3. Exploration
4. Accelerated Rehabilitation Program
5. NJV Community Programs
6. Waisoi Project
7. Next Steps
8. NJV Communications
9. Questions

Why Fiji??

1. Geology
2. Prospectivity
3. Not well explored
4. Mineral Endowment
5. Fiji's mining history
6. Government policy conducive to mineral exploration and development
7. Mining Legislative framework in place

Namosi Joint Venture



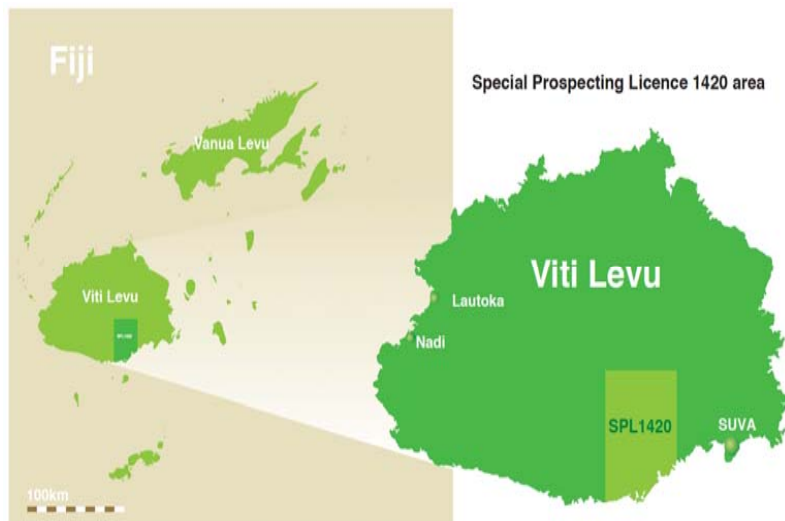
Formed in January 2008

- Newcrest (Fiji) Ltd - 69.94%
- Mitsubishi Materials Investments (Fiji)Ltd - 28.06%
- Nittetsu Mining Co. Ltd - 2%

Newcrest is operator and manager

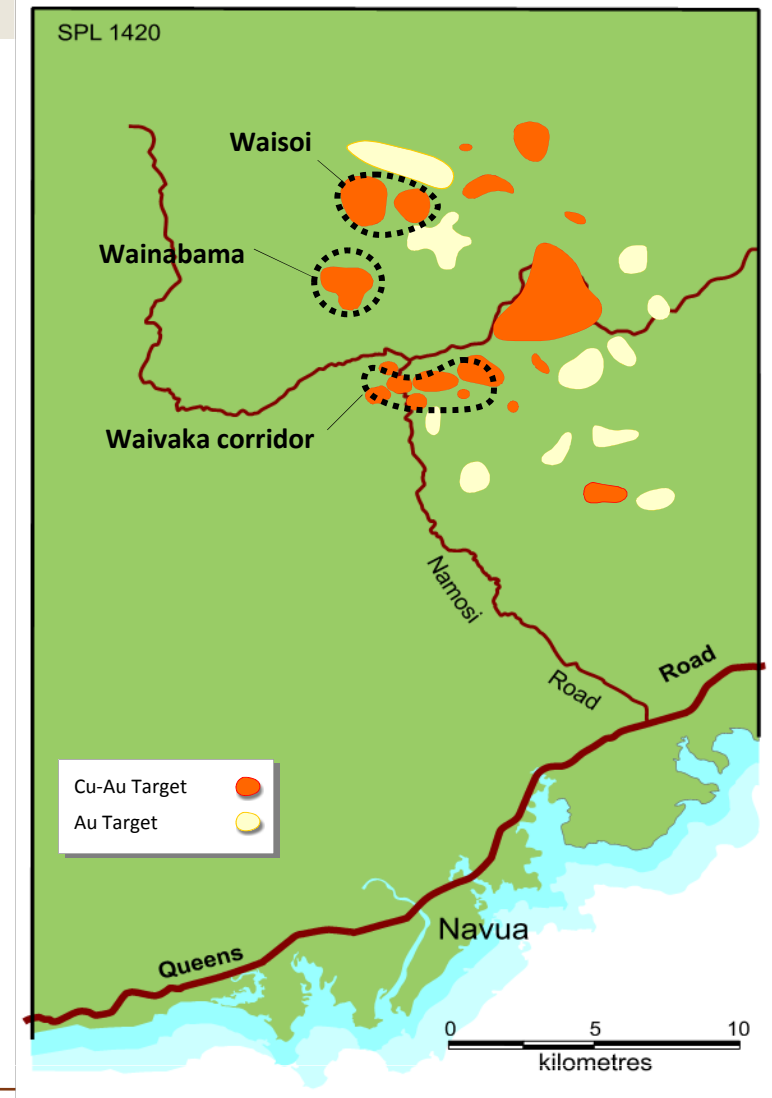
Special Prospecting Licence (SPL 1420) granted to March 2015

Primarily in Namosi and Naitasiri Provinces



Exploration

- Area has been explored for 40 years by a variety of companies
- Area of the SPL1420 72,352 ha
- Exploration holes drilled 463 (NJV – 107)
- Metres drilled in the order of 155km (distance Suva to Nadi 187Km)



Exploration Initiatives



Exploration Initiatives

Positive Initiatives in our drilling program:

1. Implemented a revised Surface Disturbance Procedure
2. Interaction with the Land Owner in the location and design of the drill pad
3. Engineering design of the pad and access track – minimise footprint
4. Formal signoff by Land Owner and Government agencies prior to construction
5. Focus on site water management and runoff controls
6. Rehabilitation timeframe commitment – within 14 days of end of hole
7. Rehabilitation prescription done in consultation with Land Owner – focus on native species

Rehabilitating the Environment

Exploration



Accelerated Rehabilitation Programme



1. The rehabilitation Phase 2 Priority 1 works were completed on 19th February 2013
2. This involved:
 - Hydro - seeding of 80,000m²
 - 540,000 ferns planted ,
 - 2,600 shrubs and
 - 4,200 trees planted
3. A review of the completed rehabilitation works was undertaken by Beca Consultant with involvement of TNLC and Land owners
4. The results of this assessment will be used to scope the works required for the completion of the remaining RAP work packages (Priority 2 Phase 2)
5. RAP final works planned to recommence in August
6. Rehabilitation Spend to date FJ\$ 8.3M

Accelerated Rehabilitation Programme



NVD 039 March 2012



NVD 039 March 2013

NJV Community Programs

Approach is to maximise partnerships with Government and other service providers for programs in our footprint

Examples of some of the community programs we have undertaken in the past 12 months include:

1. Community Nurseries at Naitavuni and Namosi
2. St Johns First Aid Training- 180 trained in basic first aid
3. Education Assistance Program (\$800,000 over last 4 years)
4. Fish Ponds – livelihood program
5. Ministry of Women and Social Welfare – Basic Sewing Machine Maintenance and Basic Sewing Training – 48 participants
6. Centre of Appropriate Technology and Development – Small Engine Maintenance – 33 students
7. Ministry of Health – Health Awareness and Empowerment Program Nawaidina Villages 179 attendees

Naitavuni Community Nursery



Naitavuni Community Nursery



Waisoi Project Current Status

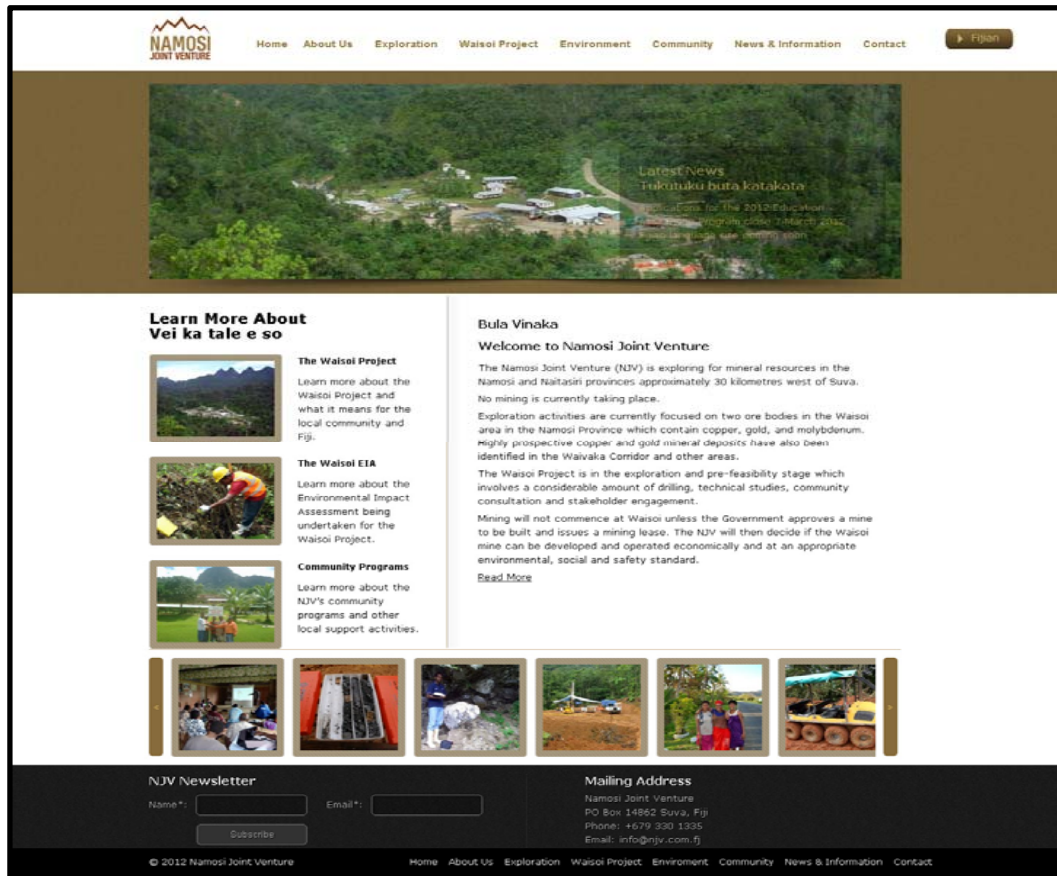
1. Waisoi Project is in the Pre Feasibility study stage
2. Completed the studies drilling program (geotechnical) in the Wainavadu River valley – no fatal flaws identified
3. Environmental and Social studies continuing to support ESIA requirements



Next Steps

1. Continue agreed accelerated exploration rehabilitation activities
2. Exploration program focussed on Waivaka Corridor
3. Pre Feasibility study continues
4. Continue Environmental and Social studies program

NJV - communications



Website launched early March 2012

www.njv.com.fj

ITaukei website launched July 2012

Information materials:

- Maps
- Physical models
- Newsletter
- Brochures
- Fact sheets
- Posters
- Frequently asked questions

Vinaka Vakalevu

E so na Taro?