

## Waisoi Project Na Cakacaka mai Waisoi

### Overview

The Namosi Joint Venture (NJV) is conducting studies and exploration to determine if a copper mine with gold by products can be developed at Waisoi.

The Waisoi area is around 30 kilometres west of Suva in the Namosi and Naitasiri provinces in Fiji. It is bounded by the Wainavadu River valley in the north, the Waidina River in the east and south and by the Korobasabasaga Range in the west.

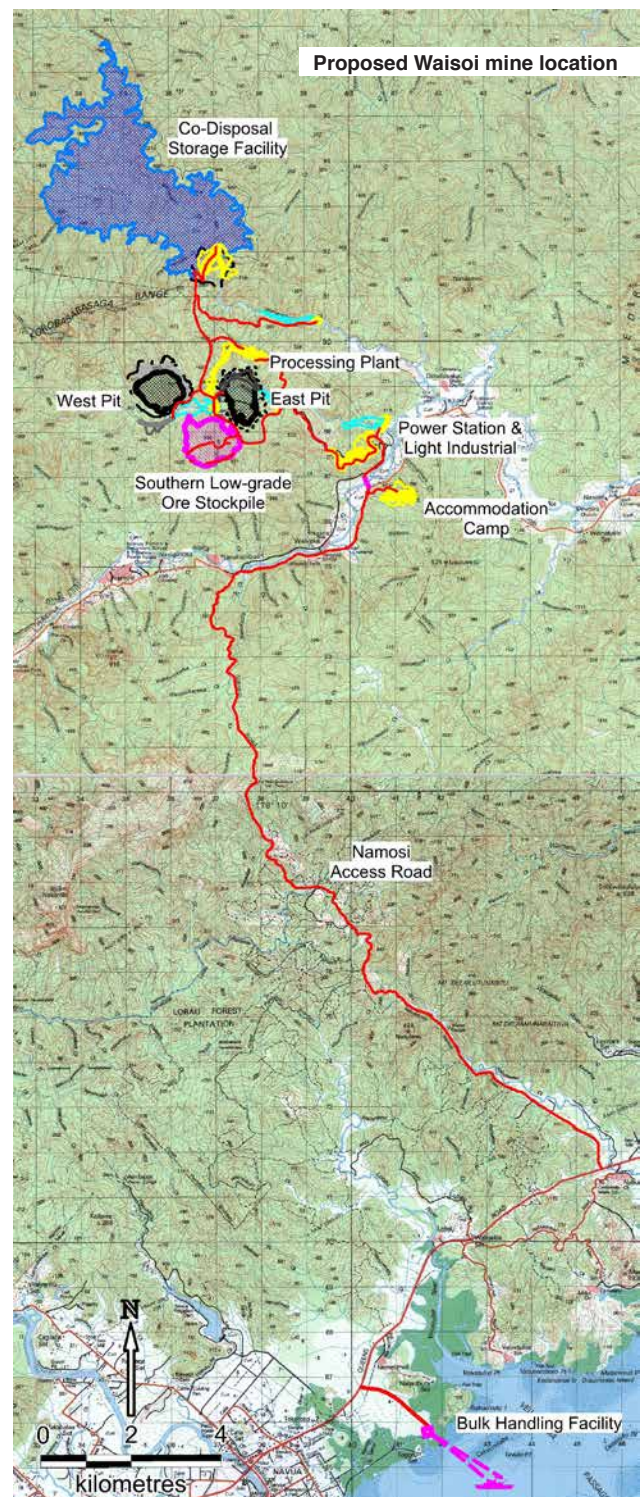
The Waisoi Project, if approved and developed would include open pit mining to produce a copper concentrate with gold by products for export. The key mine infrastructure would include two open pits, a co-disposal storage facility for tailings and waste rock, a southern low-grade ore stockpile, a power station and processing plant, accommodation and access roads, and a bulk handling facility for the export of copper concentrate and import of fuel.

### Kena Yaloyalo raraba

Na Namosi Joint Venture e sa cakava tiko ena gauna oqo na vakadidike (exploration) ke rawa ni dola e dua nai qaqi ni kopa ka tiko kina na tikitiki ni koula e Waisoi.

E tiko o Waisoi ena 30 na kilomita ki na ra kei Suva ena kedrau maliwa ko Namosi kei Naitasiri. E toka ena kedratou maliwa na buca ni uciwai na Wainavadu ena vualiku, na uciwai na Waidina ki na tokalau kei na ceva ka ruguta tiko na ulunivanua na Korobasabasaga Range ena ra.

Na Waisoi Project, ke vakadonui ka cakacakataki, ena tiko kina na qara-bilo (open pit mining) me keli kina na kopa ka tiko kina na tikitiki ni koula me volitaki ki valagi. Na veika ena tara oya e rua na qara-bilo (open pit), na vanua me maroroi kina na wai mai na qaqi ni kopa kei na vovo ni vatu qaqi, dua na siteseni ni livaliva, na vale ni qaqi ni kopa, keba ni valenivolavola kei na gaunisala ni veilakoyaki, kei na wavu.



## Fast facts – Waisoi Mine. Tukutuku dina ka totolo—Qaqi ni vatutalei mai Waisoi (Mine).

- No relocation of villages
- No use of or no direct impact to the Sovi Basin
- No cyanide or mercury to be used during the copper processing
- The co-disposal facility for tailings and waste rock will be located in the Wainavadu Valley (closest point around 6 kilometres from Delailasakau village).
- Estimated up to 2000 construction jobs and around 900 - 1,200 operational jobs
- More than US\$1 billion to build the mine
- Sega ni toki e dua na koro
- Sega ni vakayagataki se vakacacani na Sovi Basin
- Sega ni vakayagataki na 'cyanide' se 'mercury' ena gauna nai qaqi-kopa/koula
- Na vanua me maroroi kina na wai kei nai vovo ni vatu qaqi e Wainavadu ena rauta tiko ni ono na kilomota mai na koro ko Delailasakau
- Vinakati kina e 2,000 na tamata cakacaka me tauyavutaki nai qaqi ka 900 - 1,200 na cakacaka ni sa tekivu na kelikeli
- Ena rauta tiko na dua na Bilioni nai lavo ni Merika (US\$1 billion) me tara kina nai qaqi (mine)

### Project status and milestones

The Waisoi Project is in the exploration phase and an Environmental Impact Assessment (EIA) is underway. No mining is currently taking place.

There are a number of decisions that must be made before a mine is built:

1. Government approval of the Waisoi Project EIA
2. NJV decision whether to build the mine
3. Issuing of a mining permit by the Government.

The NJV estimates a mine life of 20 - 25 years. The mine would be operated under environmental conditions imposed by the Government. A mine rehabilitation plan would be developed in consultation with the government and local community.

**The project will not proceed if the Fiji government does NOT approve the EIA. The NJV will not build the mine if it does not believe the mine could be developed and operated economically and at an appropriate environmental, social and safety standard.**

### Waisoi Project Environmental Impact Assessment (EIA)

The Waisoi Project EIA is a study that will assess and identify potential environmental and social impacts from the mine and provide options on how they could be mitigated and managed.

The EIA is based on a Terms of Reference established by the Department of Environment. The EIA is being conducted by independent consultants, supported by the Institute of Applied Science at the University of the South Pacific.

### Veika sa vakacagau tiko kei nai tuvatuva bibi eso

Ena gauna oqo e se caka tikoga e Waisoi na vakadidike (exploration) kei na kena dikevi na veika e wavoliti keda (EIA). Sega ni dua na keli vatu talei e se caka tiko ena gauna oqo.

Levu na vakatulewa e dodonu me tau ni bera ni qai tara nai qaqi ni vatutalei:

1. Veivakadonui ni matanitu me baleta na Waisoi Project EIA
2. Nona vakatulewa o NJV me tara nai qaqi (mine) se sega
3. Soli ni vola tara me baleta na qaqi ni vatu talei mai vua na matanitu.

E namaka tiko o NJV ni na taura e 20 -25 na yabaki na kelikeli. Ena vakayacori na cakacaka me vaka na lawa ni matanitu ena kena tataqomaki na veika e wavoliti keda. Ena qai tauyavutaki e dua nai tuvatuva ni veivakacokotaki (mine rehabilitation plan) ena dela ni veivosaki kei na matanitu kei kemuni nai taukei ni qele.

**Ena sega ni toso na cakacaka ke SEGA ni vakadonuya na Matanitu na EIA. O NJV ena sega ni tara nai qaqi ke sega ni rawa me cakacakataki rawa vakailavo, maudonu na kena qaravi na veika e wavoliti keda, na lewe ni vanua kei na taqomaki talega ni bula.**

### Na dikevi ni veika e wavoliti keda kei na bula ni lewe ni vanua ena Waisoi Project (EIA)

Na Waisoi Project EIA e dua na vakadidike ka na dikeva tiko na revurevu ni vakacaca ka rawa ni kauta mai nai cakacaka oqo ena veika e tu wavoliti keda (environment) kei na kena yaga se ca kina lewe ni vanua ka vakarautaka talega na gaunisala eso me wali se vakalailaitaki kina na revurevu.

Na cakacaka ni EIA e yavutaki ena dua na i Vola Dusidusi ka vakarautaka na tabana vakamatani ka qarava na veika e wavoliti keda. E cakava tiko ena gauna oqo na vakadidike e so na kabani era kena dau, ka veitokoni kina na Institute of Applied Science mai na Yunivesiti ni Ceva (USP).





## Community benefits

The Waisoi Project is already delivering a range of local community and government benefits from its exploration and study activities, including:

- Landowner compensation for land access and use
- Local jobs in a range of exploration and other roles
- Upgrades to community facilities
- Education assistance to over 800 local students to undertake tertiary education, and basic technical skills training for the communities
- Establishment of nurseries to support rehabilitation program
- Government revenue from employee and corporate taxes and exploration fees.

If a mine at Waisoi can be developed, it will bring significant opportunities and benefits to the local and wider Fiji community, including:

- Landowner compensation for land access and use
- Estimated up to 2000 construction jobs and around 900 - 1,200 operational jobs
- Community development, education and training programs
- Investment in universities and training institutions
- Business opportunities for local suppliers and contractors
- Upgrade and construction of local infrastructure and services
- Government revenue from taxes and minerals extraction royalties

## What is the Namosi Joint Venture (NJV)?

The NJV is a group of three companies who have come together to explore for and potentially mine mineral resources in Namosi and Naitasiri Provinces, west of Suva.

The NJV was established in January 2008 and includes:

- Newcrest Mining Limited (70.67%)
- Mitsubishi Materials Corporation (27.33%)
- Nittetsu Mining Co. Ltd (2%).

## Waisoi Exploration camp in Namosi Province



## Eso na veika yaga ena kauta mai na veivakatorocaketaki oqo kina lewe ni vanua

Na Waisoi Project e sa solia tiko e levu sara na veivuke ki na lewe ni vanua kei na Matanitu mai na vakadidike e caka tiko ka oka kina:

- Saumi na Taukei ni Qele ena kena curumi kei na vakayagataki na qele
- Vakacakacakataki na lewe ni vanua ena vakadidike kei na veitavi tale eso
- Vakavinakataki na gaunisala, kawakawa kei na veivuke raraba tale eso
- Soli ni sikolasivi vei ira e sivia e 500 na gone mera vuli ena vuli toro cake kei na vuli tara
- Tauyavu na vanua ni bucibucini kau me vukea na vakacokotaki ni Vanua
- Vakailavotaki na Matanitu ena saumi vakacavacava kei na veika ena lavaka ena vuku ni vakadidike.

Kevaka e rawa ni tara e dua nai qaqi ni vatu talei e Waisoi, ena kauta mai na veivakatorocaketaki vei kemuni nai Taukei ni Qele kei Viti raraba, oka kina:

- Kena saumi vakailavo vei ira nai taukei ni qele na qele taucoko ena vakayagataki
- Volekata e 2,000 na cakacaka ena kena tara na qaqi kei na 900 - 1,200 na cakacaka ena gauna ni kelikeli
- Vakatoroicaketaki na lewe ni vanua, vuli kei na vuli-tara
- Na veivakatorocaketaki ena sala ni vuli ena Yunivesiti kei na veikoronivuli ni vuli toro cake
- Vakavure bisinisi vei ira na dauveivoli kei ira na konitaraki
- Vakavinakataki kei na tara ni gaunisala ni vetosoyaki kei na veitaratara
- Saumi vakacavacava ki na Matanitu kei na soli ni 'royalty' mai na tauri ni vatutalei ka na vagolei ki na vakavinakataki ni veika yaga raraba kei na veiqaravi tale eso.

## A cava sara mada na Namosi Joint Venture (NJV)?

Na NJV e kovuti tiko kina e 3 na kabani ka ratou lomavata me ratou vakadikeva ka raica ke rawa ni keli na vatutalei ena Yasana Vakaturaga o Namosi kei Naitasiri, ena ra kei Suva.

A mai tauyavutaki na NJV ena Janueri ni 2008 ka oka kina na:

- Newcrest Mining Limited (70.67%)
- Mitsubishi Materials Corporation (27.33%)
- Nittetsu Mining Co. Limited (2%).